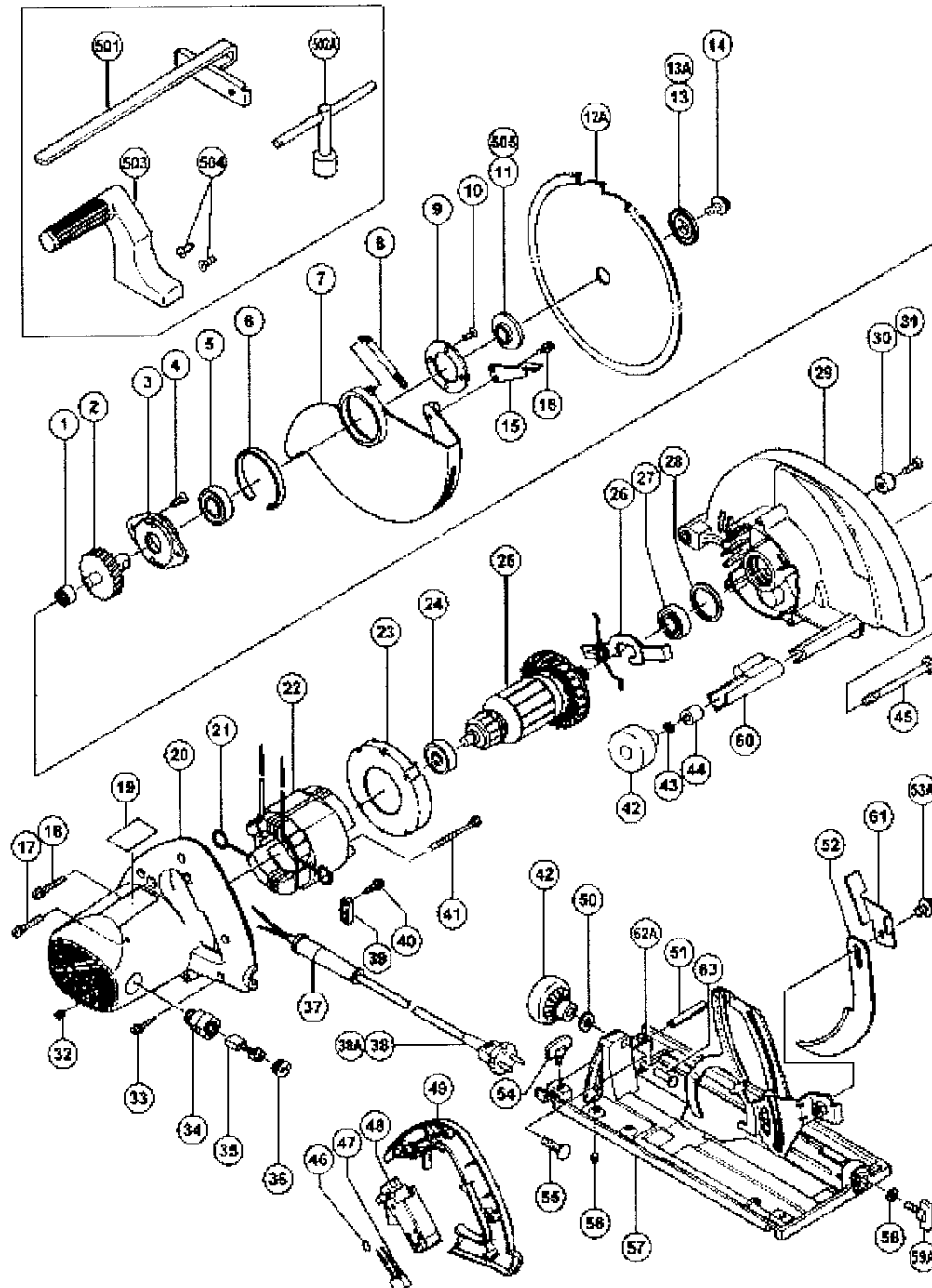


ELECTRIC TOOL PARTS LIST

■ CIRCULAR SAW Model C 9U

2004 · 12 · 1

(E4-1)



PARTS

C9U

ITEM No.	CODE No.	DESCRIPTION	No. USED	REMARKS
1	673-002	NEEDLE BEARING (HK1212)	1	
2	303-789	SPINDLE AND GEAR SET	1	
3	303-790	BEARING HOLDER	1	
4	303-797	SEAL LOCK FLAT HD. SCREW M6X14	2	
5	620-3VV	BALL BEARING 6203VVCMP2L	1	
6	998-887	LINER	1	
7	303-802	SAFETY COVER	1	
8	303-805	RETURN SPRING	1	
9	303-804	BEARING COVER	1	
10	992-013	SEAL LOCK FLAT HD. SCREW M5X14	2	
* 11	302-476	WASHER (A)	1	FOR D30 HOLE
* 11	302-443	WASHER (A)	1	FOR D15.9 HOLE FOR FRA,SUI
* 12A	303-810	TCT SAW BLADE 235MM-D30 HOLE-NT20	1	
* 12A	303-809	TCT SAW BLADE 235MM-D15.9 HOLE-NT20	1	
* 13	302-423	WASHER (B)	1	
* 13A	962-073	WASHER (B)	1	FOR FRG,AUT
14	302-427	BOLT (W/FLANGE) M8X15.5	1	
15	302-464	KNOB	1	
16	986-662	MACHINE SCREW (W/WASHERS) M4X10	1	
17	303-796	MACHINE SCREW (W/WASHERS) M5X40 (BLACK)	1	
18	303-796	MACHINE SCREW (W/WASHERS) M5X40 (BLACK)	2	
19		NAME PLATE	1	
* 20	303-807	HOUSING ASS'Y	1	INCLUD.32,34 (TILL 10.1997 FOR NOR,DEN,
020	303-807	HOUSING ASS'Y	0	TILL 8.1998 FOR GBR,TILL 1.2000 FOR ITA,
020	303-807	HOUSING ASS'Y	0	FRG,HOL,FIN,ESP,SUI)
* 20	303-808	HOUSING ASS'Y	1	INCLUD.32,34 FOR FRA,SWE (SINCE 11.1997
020	303-808	HOUSING ASS'Y	0	FOR NOR,DEN,SINCE 8.1998 FOR GBR,SINCE
020	303-808	HOUSING ASS'Y	0	2.2000 FOR ITA,FRG,HOL,FIN,ESP,SUI)
21	937-623	BRUSH TERMINAL	2	
* 22	340-226G	STATOR ASS'Y 110V	1	INCLUD.21
* 22	340-226H	STATOR ASS'Y 220V-230V	1	INCLUD.21
23	303-794	FAN GUIDE	1	
24	630-0VV	BALL BEARING 6300VVCMP2L	1	
* 25	360-213C	ARMATURE 110V-115V	1	INCLUD.64
* 25	360-213E	ARMATURE 220V-230V	1	INCLUD.64
26	303-793	LOCK LEVER	1	
27	620-2VV	BALL BEARING 6202VVCMP2L	1	
28	303-792	RUBBER RING	1	
29	303-850	GEAR COVER ASS'Y	1	INCLUD.1,28,30,31

*:ALTERNATIVE PARTS

PARTS

C9U

ITEM No.	CODE No.	DESCRIPTION	No. USED	REMARKS
30	961-729	CUSHION	1	
31	949-794	FLAT HD. SCREW M6X20 (10 PCS.)	1	
32	938-477	HEX. SOCKET SET SCREW M5X8	2	
33	301-653	TAPPING SCREW (W/FLANGE) D4X20 (BLACK)	4	
34	983-362	BRUSH HOLDER	2	
35	999-038	CARBON BRUSH (1 PAIR)	2	
36	961-781	BRUSH CAP	2	
* 37	958-049	CORD ARMOR D8.2	1	
* 37	940-778	CORD ARMOR D10.7	1	
* 38	500-234Z	CORD	1	(CORD ARMOR D8.2)
* 38	500-247Z	CORD	1	(CORD ARMOR D10.7) FOR FRG,FIN,SWE,NOR
* 38	500-248Z	CORD	1	(CORD ARMOR D10.7) FOR SUI
* 38	500-396Z	CORD	1	(CORD ARMOR D8.2) FOR GBR (110V)
* 38A	500-435Z	CORD	1	(CORD ARMOR D8.2) FOR GBR (240V)
39	960-266	CORD CLIP	1	
40	984-750	TAPPING SCREW (W/FLANGE) D4X16	2	
41	960-251	HEX. HD. TAPPING SCREW D5X65	2	
42	302-458	KNOB	2	
43	676-531	O-RING (P-7)	1	
44	303-801	SLEEVE	1	
45	303-800	DIAGONAL BOLT M8	1	
46	961-820	TUBE (D)	2	
* 47	930-039	NOISE SUPPRESSOR	1	
* 47	994-273	NOISE SUPPRESSOR	1	FOR SUI
* 48	981-533Z	SWITCH (2P PILLAR TYPE) W/O LOCK	1	(TILL 10.1997 FOR NOR,DEN,TILL 8.1998
048	981-533Z	SWITCH (2P PILLAR TYPE) W/O LOCK	0	FOR GBR,TILL 1.2000 FOR ITA,FRG,HOL,FIN,
048	981-533Z	SWITCH (2P PILLAR TYPE) W/O LOCK	0	ESP,SUI)
* 48	961-810Z	SWITCH (2P PILLAR TYPE) W/SAFETY LOCK	1	FOR FRA,SWE (SINCE 11.1997 FOR NOR,DEN,
048	961-810Z	SWITCH (2P PILLAR TYPE) W/SAFETY LOCK	0	SINCE 8.1998 FOR GBR,SINCE 2.2000 FOR
048	961-810Z	SWITCH (2P PILLAR TYPE) W/SAFETY LOCK	0	ITA,FRG,HOL,FIN,ESP,SUI)
49	303-795	HANDLE COVER	1	
50	949-433	BOLT WASHER M8 (10 PCS.)	1	
51	949-884	ROLL PIN D8X50 (10 PCS.)	1	
52	303-806	RIVING KNIFE	1	
53A	961-794	BOLT (W/FLANGE) M8X12	1	
54	301-806	WING BOLT M6X15	1	
55	302-457	BOLT (SQUARE) M8X30	1	
56	302-469	SLOTTED HD. SET SCREW (SEAL LOCK) M6X6	1	
57	303-798	BASE ASS'Y	1	INCLUD.42,50,55,58,59A,62A,63

*:ALTERNATIVE PARTS

PARTS

C9U

ITEM No.	CODE No.	DESCRIPTION	No. USED	REMARKS
58	949-425	WASHER M6 (10 PCS.)	1	
59A	302-438	WING BOLT (A) M6X20	1	
* 60	303-932	CAP	1	FOR GBR
* 61	306-390	GUARD PLATE	1	FOR HOL
62A	308-481	BEVEL PLATE	1	
63	308-482	RIVET D6X24	1	
64	320-209	FAN	1	

STANDARD ACCESSORIES

ITEM No.	CODE No.	DESCRIPTION	No. USED	REMARKS
501	303-888	GUIDE	1	
502A	302-478	BOX WRENCH 13MM	1	
503	303-811	SIDE HANDLE	1	
504	949-340	FLAT HD. SCREW M6X16 (10 PCS.)	2	
* 505	302-476	WASHER (A)	1	FOR D30 HOLE, SINCE 9.1991 FOR FRA
601	303-930	DUST COLLECTOR SET (E)	1	
602	305-651	RIVING KNIFE (B) T2.0	1	



MODELS

C 8U/C 9U

1. PRECAUTIONS IN SALES PROMOTION:

In the interest of promoting the safest and most efficient use of the Models C 8U and C 9U Circular Saws by all of our customers, it is very important that at the time of sale the salesman carefully ensures that the buyer seriously recognizes the importance of the contents of the Handling Instructions, and fully understands the meaning of the precautions listed on the Nameplate attached to each tool.

1-1. Handling Instructions:

Although every effort is made in each step of design, manufacture, and inspection to provide protection against safety hazards, the dangers inherent in the use of any electric tool cannot be completely eliminated. Accordingly, general precautions and suggestions for the use of electric power tools, and specific precautions and suggestions for the use of the Circular Saw are listed in the Handling Instructions to be able to offer appropriated guidance to the customer during sales promotion.

1-2. Cautions on the Nameplate:

Each tool is provided with a Nameplate which lists the following basic safety precautions in the use of the tool.

- (1) For F.R. Germany, Switzerland and Austria.:

ACHTUNG

- **Bedienungsanleitung vor Inbetriebnahme lesen.**

- (2) For France:

ATTENTION

- **TRES IMPORTANT: Lire avec attention la notice d'utilisation.**

- (3) For Other Countries:

CAUTION

- **Read thoroughly HANDLING INSTRUCTIONS before use.**

2. PRECAUTIONS IN DISASSEMBLY AND REASSEMBLY:

2-1. Disassembly

The disassembly and reassembly procedures for the Models C 8U and C 9U are essentially the same. The circled numbers in the descriptions below correspond to the item numbers in the Parts List for the Model C 8U, while those in parentheses are for the Model C 9U. During disassembly and reassembly, and at all other times as well, sufficient care must be exercised in handling to ensure that there is no deviation in the flatness of the bottom surfaced of the base and in its perpendicularity with relation to the saw blade.

- (1) Prior to attempting further disassembly, ensure without fail that the TCT Saw Blade ⑫ (⑫) is removed to prevent damage to its cutting edge, and to avoid possible serious accident.
- (2) Remove the Safety Cover ⑦ (⑦):
First, disconnect the Return Spring ⑧ (⑧) from the Safety Cover ⑦ (⑦). Then, loosen the two M5 x 14 Seal Lock Flat Hd. Screws ⑩ (⑩) and take off the Bearing Cover ⑨ (⑨). The Safety Cover ⑦ (⑦) can then be removed.

- (3) Remove the Bearing Holder ③ (③) together with the Spindle Gear ② (②):
After removing the Safety Cover ⑦ (⑦) as described above, loosen the two M6 x 14 Seal Lock Flat Hd. Screws ④ (④).
- (4) Separate Spindle Gear ② (②) from the Bearing Holder ③ (③):
As illustrated in Fig. 9, support the Bearing Holder ③ (③) with an appropriate tubular jig, and push down on the end of the Spindle to separate the Spindle Gear ② (②) from the Bearing Holder ③ (③).
- (5) Remove the Armature ②④ (②⑤):
First, remove the Brush Caps ③⑤ (③⑥), and take out the Carbon Brushes ③④ (③⑤). Then, loosen the M5 x 45 Machine Screws ①⑦, M5 x 35 Machine Screw ①⑦, M5 x 40 Machine Screw ①⑧ and separate the Housing Ass'y ①⑨ (②⑩) from the Gear Cover Ass'y ②⑧ (②⑨). The Armature ②④ (②⑤) will remain attached to the Housing Ass'y ①⑨ (②⑩). Then, tap gently on the outside of the Housing Ass'y ①⑨ (②⑩) with a wooden or plastic hammer to loosen and remove the Armature ②④ (②⑤). At this time, be very careful not to hit the fan on the Armature ②④ (②⑤).
- (6) Remove the Base Ass'y ⑤⑧ (⑤⑦):
Extract the D8 x 50 Roll Pin ⑤② (⑤①), and disassemble the Base Ass'y ⑤⑧ (⑤⑦) from the Gear Cover Ass'y ②⑧ (②⑨).

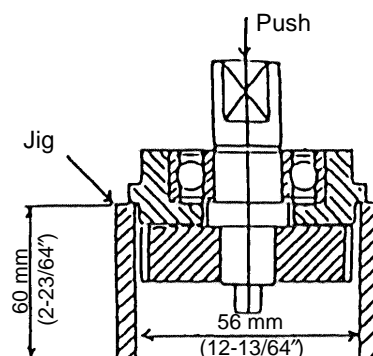


Fig. 9

2-2. Reassembly:

Reassembly can be accomplished by following the disassembly procedures in reverse. However, particular attention should be given to the following items.

(1) Tightening Torques for Fastening Screws and Bolts:

- M4 Machine Screws 14 - 24 kg.cm (12 - 21 in-lbs)
- M5 Machine Screws 28 - 50 kg.cm (24 - 43 in-lbs)
- M8 x 15.5 Flange Bolt ①④ 100 - 140 kg.cm (88 - 123 in-lbs)
- D4 Tapping Screws 15 - 25 kg.cm (13 - 22 in-lbs)
- D5 Tapping Screws 25 - 35 kg.cm (22 - 30 in-lbs)

(2) Reassemble the Armature Ass'y ②④ (②⑤):

Prior to assembling the Armature ②④ (②⑤) ensure that the Rubber Ring ②⑦ (②⑧) is properly inserted into the groove of the Bearing Case within the Gear Cover Ass'y ②⑧ (②⑨). At this time, be very careful not to damage the Rubber Ring.

(3) Reassemble the Lock Lever ②⑤ (②⑥) (See Fig. 10):

- A. Position the Lock Lever ②⑤ (②⑥) between the Fan and the 6001VVCMP52L Ball Bearing ②⑥ (②⑦) of the Armature ②④ (②⑤), and carefully assemble it together with the Armature ②④ (②⑤) into the Gear Cover Ass'y ②⑧ (②⑨).
- B. Ensure that both ends of the Spring on the Lock Lever ②⑤ (②⑥) are properly supported inside the ribs of the Gear Cover Ass'y ②⑧ (②⑨).
- C. When assembly of the Lock Lever ②⑤ (②⑥) is completed (when the Gear Cover Ass'y ②⑧ (②⑨) has been assembled to the Housing Ass'y ①⑨ (②⑩) and fastening with the M5 x 45 Machine

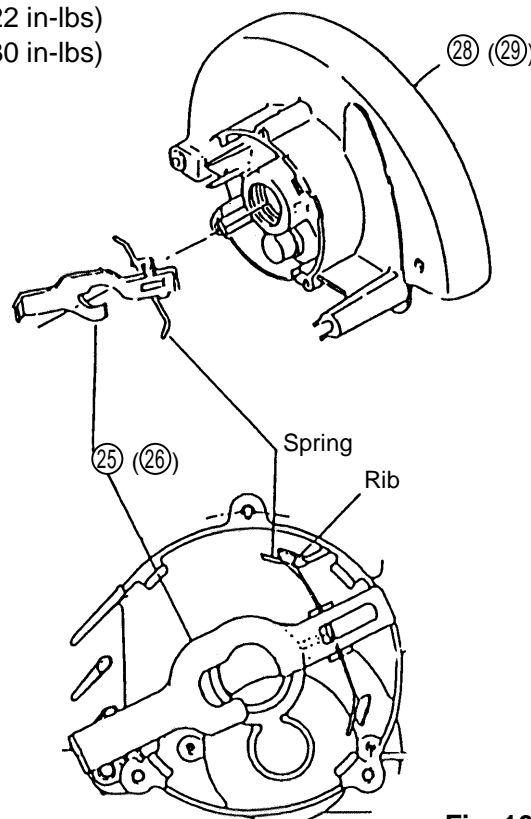


Fig. 10

Screws ⑰, (M5 x 35 Machine Screw ⑰, M5 x 40 Machine Screw ⑱) push the Lock Lever ⑳ (㉔) by hand and ensure that it returns to its original position when released.

(4) Reassemble the Stator ㉑ (㉒):

As illustrated in Fig. 11, insert a guide bar (the J-132 Stator Press pins [Special Repair Tool, Code No. 970911] are recommended) to ensure that the screw holes of the Stator ㉑ (㉒) and Housing Ass'y ⑲ (㉓) are properly aligned, and press fit the Stator ㉑ (㉒) into the Housing Ass'y ⑲ (㉓). When press fitting of the Stator ㉑ (㉒) is completed, connection between the Stator ㉑ (㉒) and the Brush Holders ㉓ (㉔) is automatically accomplished.

(5) Lubrication:

Literally apply the designated lubricants as follows:

- Within the Gear Cover Ass'y ㉔ (㉕) Hitachi Motor Grease, Code No.930035
- Ball Bearings' Chamber Hitachi Power Tool Grease No. 1, Code Nos. 939301 or 939356

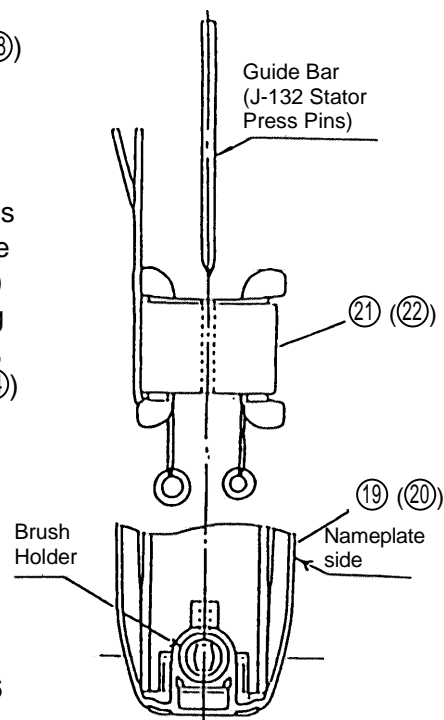


Fig. 11

(6) Wiring Diagrams (See Fig. 12 - 14)

[A] Without Noise Suppressor:

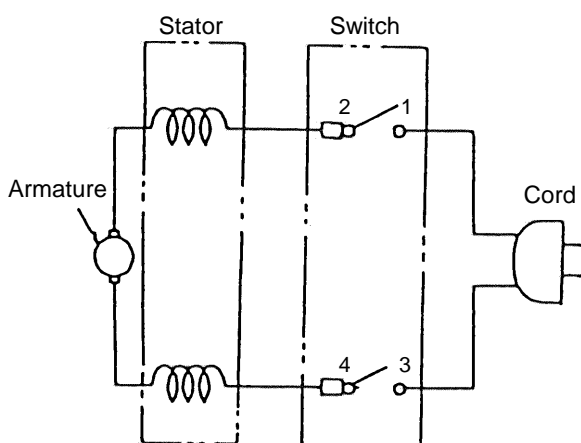


Fig. 12

[B] With Noise Suppressor:

(a) For Switzerland

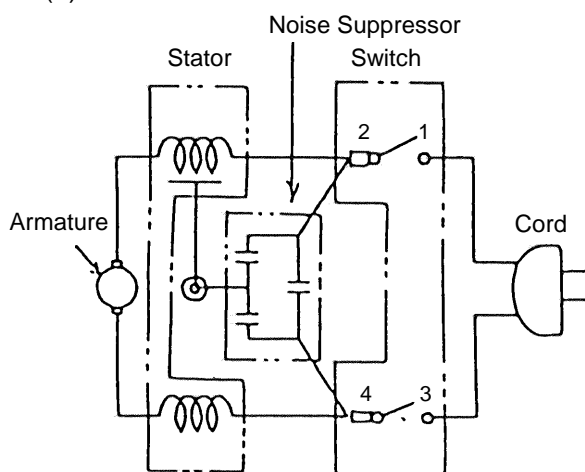


Fig. 13

(b) For other countries

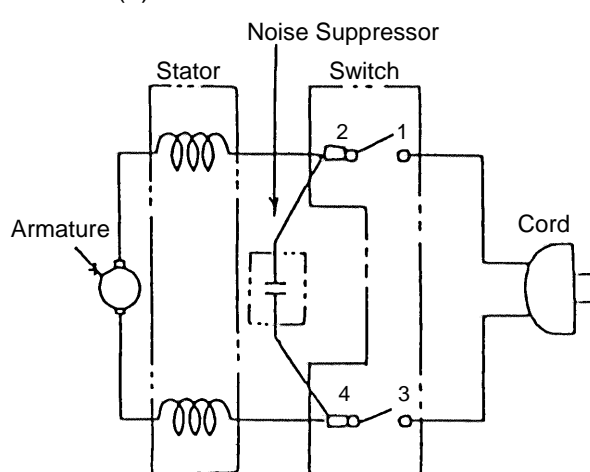


Fig. 14

(7) Internal wire arrangement (See Fig. 15 - 17).

Connect internal wires as illustrated in Fig. 15 - Fig. 17. At this time, ensure that none of the wires are pinched between components during assembly.

[A] Without Noise Suppressor

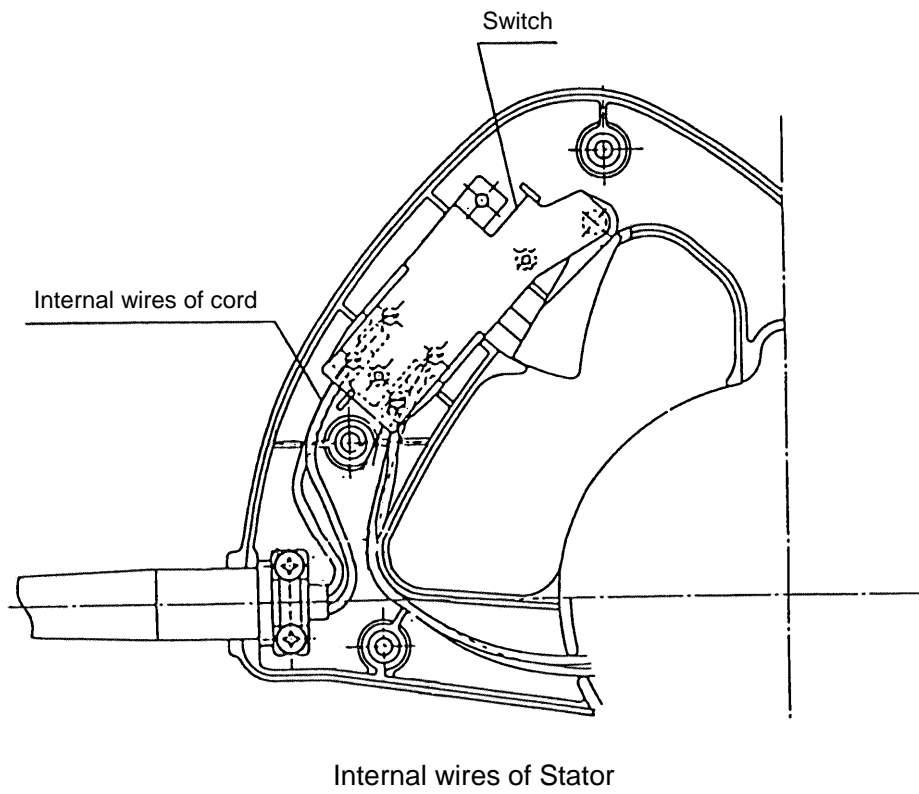


Fig. 15

[B] With Noise Suppressor

(a) For Switzerland:

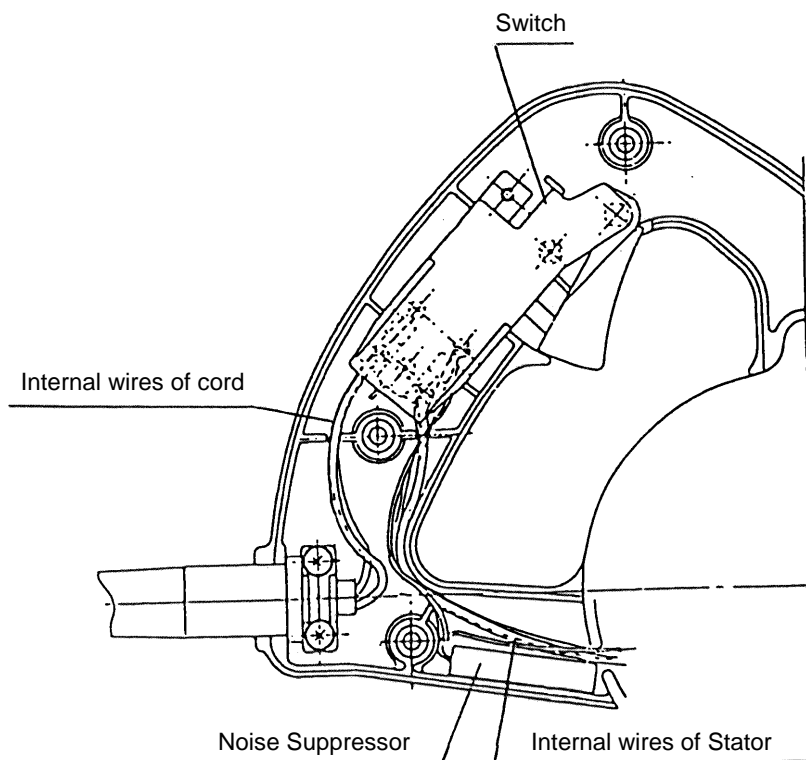


Fig. 16

(b) For other countries:

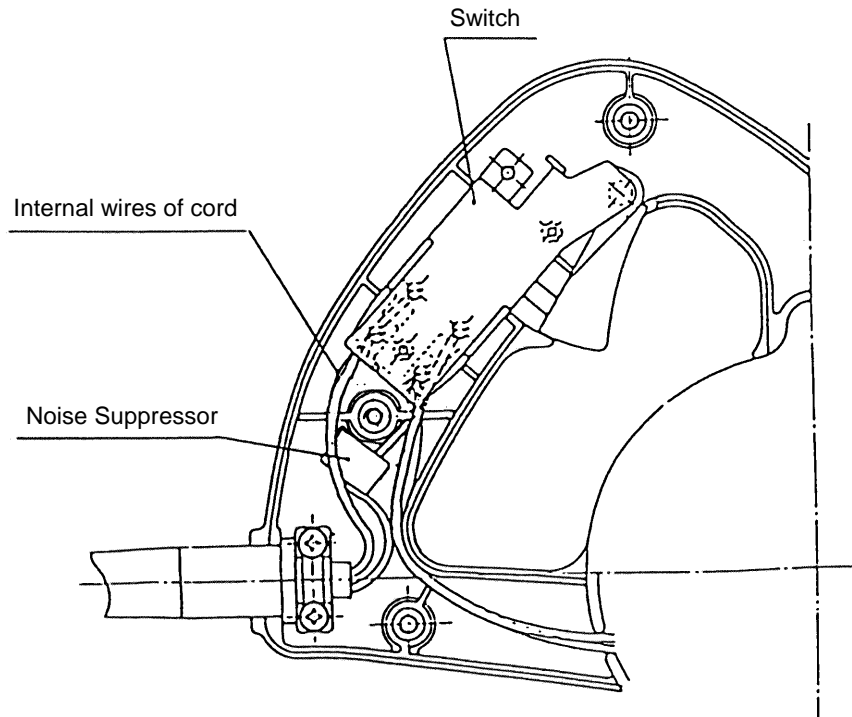


Fig. 17

(8) Insulation Tests:

On completion of disassembly and repair, measure the insulation resistance and conduct dielectric strength test.

Insulation Resistance: 7M Ω or more with DC 500 V Megohm Tester

dielectric Strength: AC 4000 V/1 minute,
with no abnormalities 220 V - 240 V
(and 110V for U.K. products)

AC 2500 V/1 minute,
with no abnormalities 110 V - 127 V
(except U.K. products)

(9) Cleaning the Cover:

Clean the exterior of the tool with a soft cloth moistened with soapy water, and dry thoroughly. Chloric solvent, gasoline, and thinner will cause plastic components to dissolve.