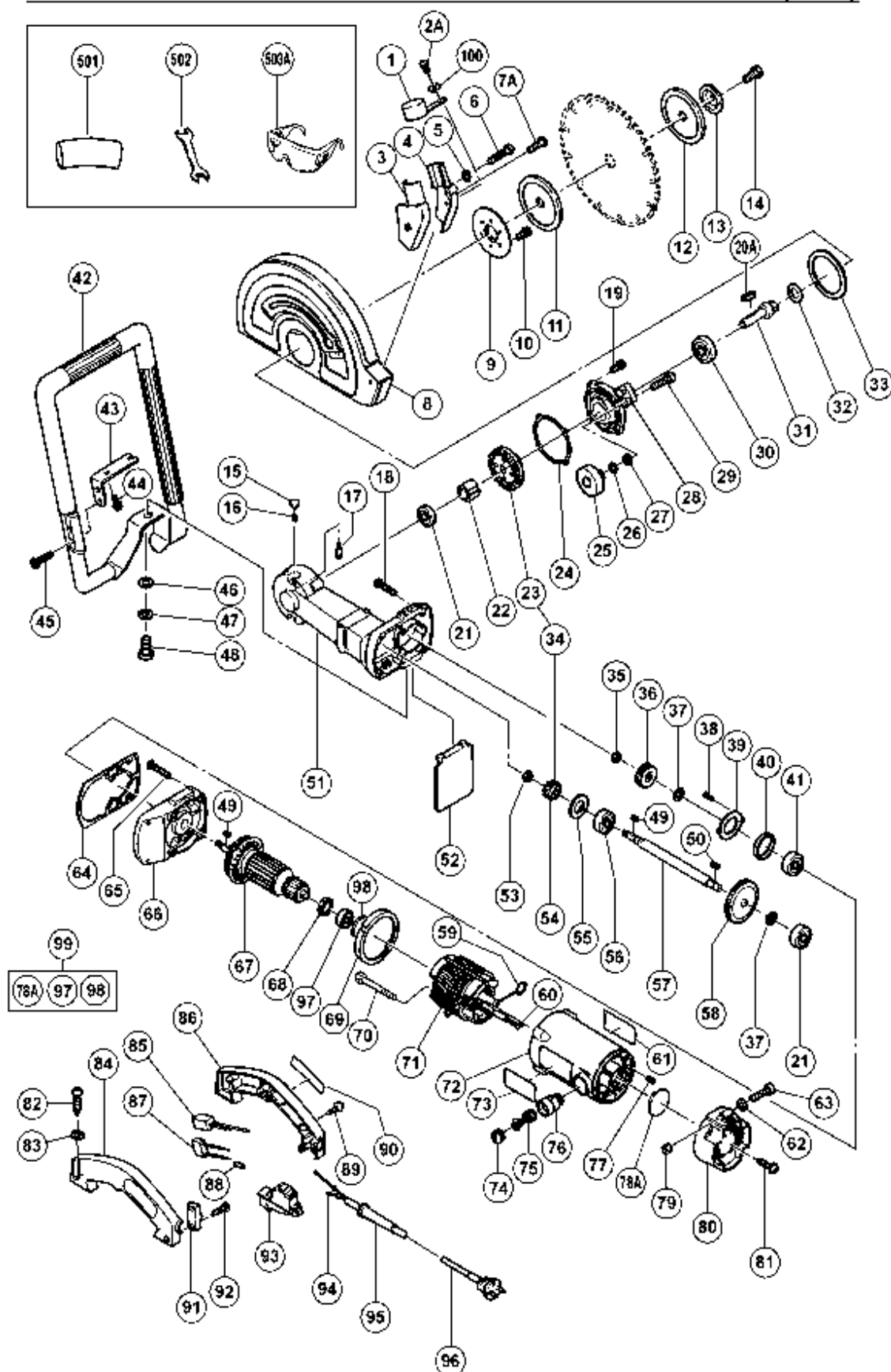


ELECTRIC TOOL PARTS LIST

■ DISC CUTTER
Model CM 12Y

2004 · 6 · 1
(E1-3)



PARTS

CM12Y

| ITEM No. | CODE No. | DESCRIPTION | No. USED | REMARKS |
|----------|----------|---|----------|--------------|
| 1 | 312-314 | RUBBER CAP | 1 | |
| 2A | 935-196 | MACHINE SCREW (W/WASHERS) M4X12 (BLACK) | 1 | |
| 3 | 312-312 | DUST COLLECTOR (B) | 1 | |
| 4 | 312-311 | DUST COLLECTOR (A) | 1 | |
| 5 | 949-453 | SPRING WASHER M4 (10 PCS.) | 1 | |
| 6 | 949-224 | MACHINE SCREW M4X30 (10 PCS.) | 1 | |
| 7A | 935-196 | MACHINE SCREW (W/WASHERS) M4X12 (BLACK) | 2 | |
| 8 | 312-310 | WHEEL GUARD | 1 | |
| 9 | 312-307 | GUARD HOLDER | 1 | |
| 10 | 992-038 | SEAL LOCK SCREW (W/SP. WASHER) M5X10 | 3 | |
| 11 | 312-327 | WHEEL WASHER (B) | 1 | |
| 12 | 312-324 | WHEEL WASHER (C) | 1 | |
| 13 | 312-308 | WHEEL WASHER (D) | 1 | |
| 14 | 312-309 | BOLT (LEFT HAND) M10X20 | 1 | |
| 15 | 306-888 | PUSHING BUTTON | 1 | |
| 16 | 306-889 | SPRING | 1 | |
| 17 | 306-890 | LOCK PIN | 1 | |
| 18 | 312-298 | MACHINE SCREW (W/WASHERS) M5X35 | 4 | |
| 19 | 994-192 | HEX. SOCKET HD. BOLT (W/FLANGE) M5X16 | 4 | |
| 20A | 948-920 | FEATHER KEY 4X4X30 | 1 | |
| 21 | 620-0VV | BALL BEARING 6200VVCMP2L | 2 | |
| 22 | 312-303 | LOCK SLEEVE | 1 | |
| 23 | 306-122 | GEAR | 1 | |
| 24 | 312-304 | SEAL PLATE (A) | 1 | |
| 25 | 302-458 | KNOB | 1 | |
| 26 | 949-433 | BOLT WASHER M8 (10 PCS.) | 1 | |
| 27 | 957-042 | SUPER LOCK WASHER M8 | 1 | |
| 28 | 312-305 | PACKING GLAND | 1 | |
| 29 | 302-457 | BOLT (SQUARE) M8X30 | 1 | |
| 30 | 630-2DD | BALL BEARING 6302DDCMP2L | 1 | |
| 31 | 312-302 | SPINDLE | 1 | |
| 32 | 312-306 | FELT PACKING | 1 | |
| 33 | 312-651 | SPACER | 1 | |
| 34 | 306-121 | GEAR AND PINION ASS'Y | 1 | INCLUD.23,54 |
| 35 | 946-228 | U-NUT M8 | 1 | |
| 36 | 312-325 | PINION (A) | 1 | |
| 37 | 312-294 | SPACE WASHER | 2 | |
| 38 | 990-430 | SEAL LOCK FLAT HD. SCREW M4X10 | 2 | |
| 39 | 312-293 | BEARING COVER | 1 | |
| 40 | 994-208 | RUBBER RING (B) | 1 | |
| 41 | 630-1DD | BALL BEARING 6301DDCMP2L | 1 | |

*:ALTERNATIVE PARTS

PARTS

CM12Y

| ITEM No. | CODE No. | DESCRIPTION | No. USED | REMARKS | |
|----------|----------|---------------------------------------|--------------------------|--------------|----------------------|
| 42 | 312-315 | PIPE HANDLE (C) | 1 | | |
| 43 | 312-316 | JOINT PLATE | 1 | | |
| 44 | 878-533 | HEX. SOCKET HD. BOLT (W/FLANGE) M6X16 | 2 | | |
| 45 | 878-877 | HEX. SOCKET HD. BOLT (W/FLANGE) M6X30 | 2 | | |
| 46 | 949-437 | BOLT WASHER M12 (10 PCS.) | 1 | | |
| 47 | 949-463 | SPRING WASHER M12 (10 PCS.) | 1 | | |
| 48 | 949-671 | BOLT M12X25 (10 PCS.) | 1 | | |
| 49 | 940-533 | FEATHER KEY 3X3X10 | 2 | | |
| 50 | 948-919 | FEATHER KEY 4X4X15 | 1 | | |
| 51 | 312-297 | GEAR COVER ASS'Y | 1 | INCLUD.15-17 | |
| 52 | 312-313 | DUST GUARD | 1 | | |
| 53 | 960-256 | U-NUT (LEFT HAND) M8 | 1 | | |
| 54 | 306-123 | PINION | 1 | | |
| 55 | 312-296 | THRUST WASHER (A) | 1 | | |
| 56 | 630-1VV | BALL BEARING 6301VVCMP2L | 1 | | |
| 57 | 312-295 | DRIVE SHAFT | 1 | | |
| 58 | 315-326 | FIRST GEAR (A) | 1 | | |
| 59 | 958-032 | BRUSH TERMINAL | 2 | | |
| 60 | 981-373 | TUBE (D) | 1 | | |
| 61 | | HITACHI LABEL | 1 | | |
| 62 | 949-425 | WASHER M6 (10 PCS.) | 1 | | |
| 63 | 949-263 | MACHINE SCREW M6X35 (10 PCS.) | 1 | | |
| 64 | 312-291 | SEAL PLATE (B) | 1 | | |
| 65 | 301-654 | TAPPING SCREW (W/FLANGE) D5X35 | 4 | | |
| 66 | 312-292 | INNER COVER | 1 | | |
| * | 67 | 360-287C | ARMATURE ASS'Y 100V-115V | 1 | |
| * | 67 | 360-287E | ARMATURE ASS'Y 220V-230V | 1 | |
| * | 67 | 360-287F | ARMATURE ASS'Y 240V | 1 | |
| 68 | 310-998 | DUST SEAL | 1 | | |
| 69 | 306-103 | FAN GUIDE | 1 | | |
| 70 | 984-271 | HEX. HD. TAPPING SCREW D5X75 | 2 | | |
| * | 71 | 340-348 | STATOR ASS'Y 100V-110V | 1 | INCLUD.59,60 |
| * | 71 | 340-349E | STATOR ASS'Y 230V | 1 | INCLUD.59,60 |
| * | 71 | 340-349F | STATOR ASS'Y 240V | 1 | INCLUD.59,60 |
| * | 71 | 340-349G | STATOR ASS'Y 230V | 1 | INCLUD.59,60 FOR SGP |
| 72 | 306-102 | HOUSING ASS'Y | 1 | INCLUD.76,77 | |
| 73 | | NAME PLATE | 1 | | |
| 74 | 940-540 | BRUSH CAP | 2 | | |
| 75 | 999-044 | CARBON BRUSH (1 PAIR) | 2 | | |
| 76 | 980-487 | BRUSH HOLDER | 2 | | |
| 77 | 938-477 | HEX. SOCKET SET SCREW M5X8 | 2 | | |

*:ALTERNATIVE PARTS

PARTS

CM12Y

| ITEM No. | CODE No. | DESCRIPTION | No. USED | REMARKS | |
|----------|----------|--|--|--------------|------------------------------|
| 78A | 313-306 | BEARING BUSHING | 1 | SINCE 6.1996 | |
| 79 | 949-556 | NUT M6 (10 PCS.) | 1 | | |
| 80 | 312-299 | TAIL COVER | 1 | | |
| 81 | 305-558 | TAPPING SCREW (W/FLANGE) D5X25 (BLACK) | 4 | | |
| 82 | 949-241 | MACHINE SCREW M5X20 (10 PCS.) | 2 | | |
| 83 | 949-454 | SPRING WASHER M5 (10 PCS.) | 2 | | |
| 84 | 312-300 | HANDLE (A) | 1 | | |
| * | 85 | 312-318 | DIODE | 1 | FOR GBR (110V) |
| | 86 | 312-301 | HANDLE (B) | 1 | |
| * | 87 | 311-935 | NOISE SUPPRESSOR | 1 | EXCEPT FOR GBR (110V) |
| | 88 | 981-373 | TUBE (D) | 2 | |
| | 89 | 304-035 | TAPPING SCREW (W/FLANGE) D4X25 (BLACK) | 3 | |
| | 90 | 312-317 | GRIP RUBBER | 2 | |
| | 91 | 960-266 | CORD CLIP | 1 | |
| | 92 | 984-750 | TAPPING SCREW (W/FLANGE) D4X16 | 2 | |
| | 93 | 307-650 | SWITCH (2P PILLAR TYPE) W/SAFETY LOCK | 1 | |
| * | 94 | 981-373 | TUBE (D) | 2 | EXCEPT FOR GBR |
| | 95 | 940-778 | CORD ARMOR D10.7 | 1 | |
| * | 96 | 500-438Z | CORD | 1 | |
| * | 96 | 500-246Z | CORD | 1 | (CORD ARMOR D10.7) FOR GBR |
| * | 96 | 500-423Z | CORD | 1 | FOR SGP |
| * | 96 | 500-439Z | CORD | 1 | FOR AUS |
| | 97 | 600-0VV | BALL BEARING 6000VVCMP2L | 1 | SINCE 6.1996 |
| | 98 | 994-202 | RUBBER RING (A) | 1 | SINCE 6.1996 |
| | 99 | 313-307 | BEARING BUSHING ASS'Y | 1 | INCLUD.78A,97,98 TILL 5.1995 |
| | 100 | 322-270 | THRUST WASHER | 1 | |

STANDARD ACCESSORIES

| ITEM No. | CODE No. | DESCRIPTION | No. USED | REMARKS |
|----------|----------|--|----------|---------|
| 501 | 312-360 | HOSE | 1 | |
| 502 | 974-254 | WRENCH 17/19MM | 1 | |
| 503A | 875-769 | SAFETY GLASSES | 1 | |
| 601 | 312-323 | WHEEL WASHER (A) | 1 | |
| 602 | 985-608 | CUT-OFF WHEEL FOR METAL D25.4 (10 PCS.) | 1 | |
| 603 | 985-609 | CUT-OFF WHEEL FOR METAL D22 (10 PCS.) | 1 | |
| 604 | 985-610 | CUT-OFF WHEEL FOR STONE D25.4 (10 PCS.) | 1 | |
| 605 | 985-611 | CUT-OFF WHEEL FOR STONE D22 (10 PCS.) | 1 | |
| 606 | 985-618 | DIAMOND WHEEL (SEGMENT) 305MM-D22.2 HOLE | 1 | |
| 607 | 985-619 | DIAMOND WHEEL (SEGMENT) 305MM-D22.2 HOLE | 1 | |
| 608 | 312-367 | DIAMOND WHEEL (SEGMENT) 305MM-D22.2 HOLE | 1 | |

*:ALTERNATIVE PARTS

